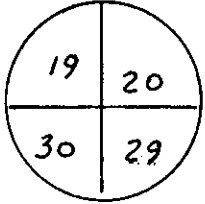


CERTIFIED LAND CORNER RECORDATION

T-14-N, R-65-W

DESCRIPTION OF CORNER EVIDENCE FOUND, AND ORIGINAL RECORD (If known)

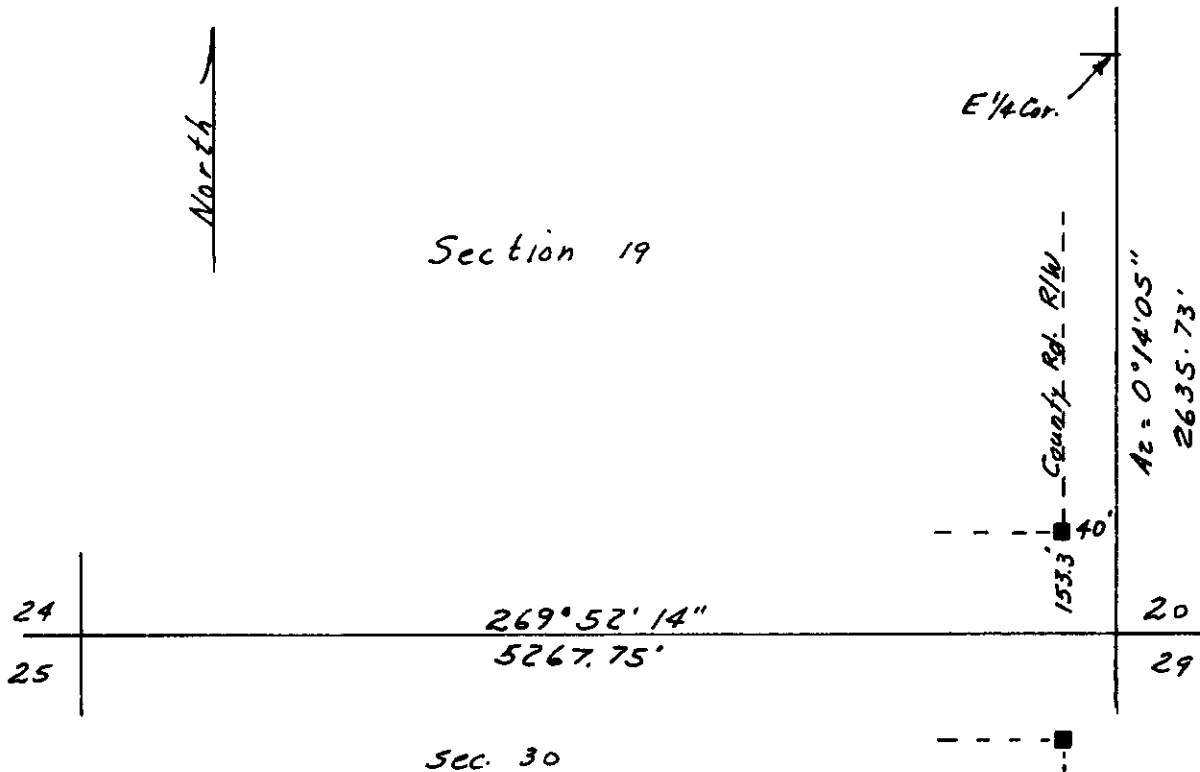


Location was determined by reference to Wyoming Highway Dept. R/W Markers and Ties shown on Highway Dept. Plans For Proj. F-FI-138(14).

DESCRIPTION OF MONUMENT AND ACCESSORIES ESTABLISHED TO PERPETUATE THE ORIGINAL LOCATION OF THIS CORNER:

None

SKETCH, WITH COURSE AND DISTANCE TO ADJACENT CORNER IF DETERMINED IN THIS SURVEY.
(May Sketch or Paste Reproduction on Reverse Side.)



I, Edward C. Fry certify that I have carefully performed or reviewed the work done on the diagrammed corner as reported on this recordation form and approve the same.

Edward C. Fry
Signature of Surveyor

P.E./L.S. No. 662
Registration No.

STATE OF WYOMING,
Office of Clerk and Recorder,
County of _____

699538

This "corner record" was filed for record on the MAY 23 day of 1983, 19____, was noted on the cross-index plat and is assigned page No. _____, in book No. _____.

County Official			
Cross Index No. <u>R-5</u>	T. <u>14</u>	R. <u>65</u>	Mer.
_____	T. _____	R. _____	Mer.
_____	T. _____	R. _____	Mer.
_____	T. _____	R. _____	Mer.
_____	T. _____	R. _____	Mer.
_____	T. _____	R. _____	Mer.
_____	T. _____	R. _____	Mer.

R-5 ① 14-65